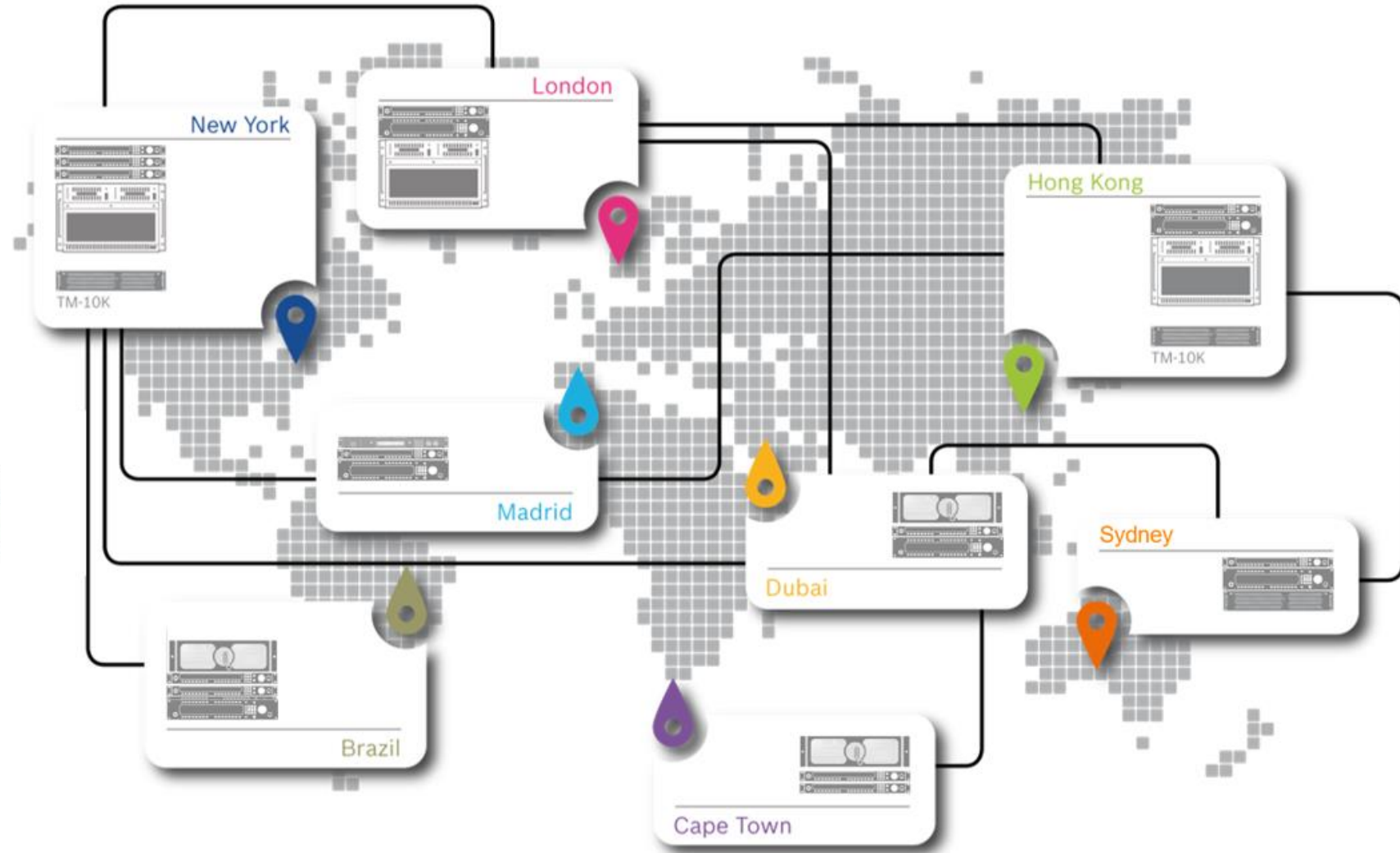
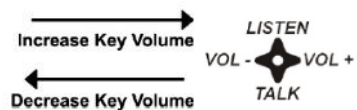
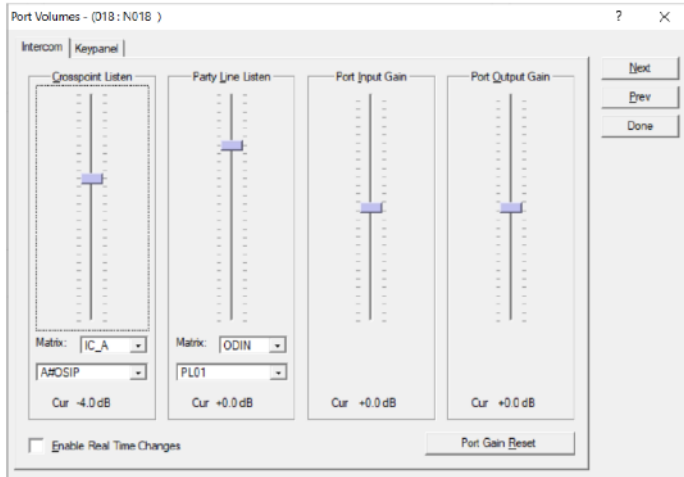


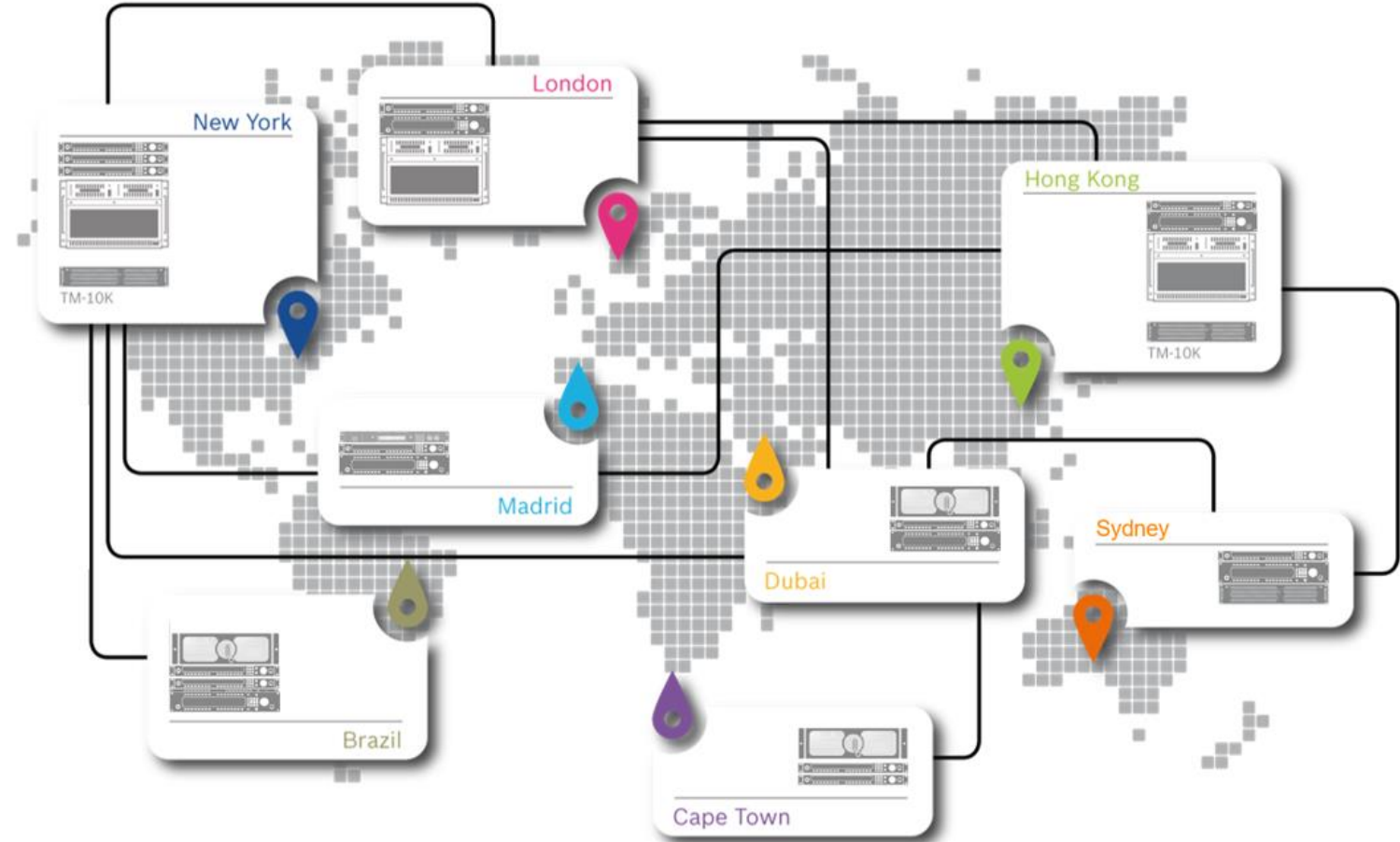
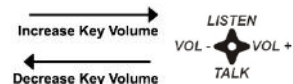
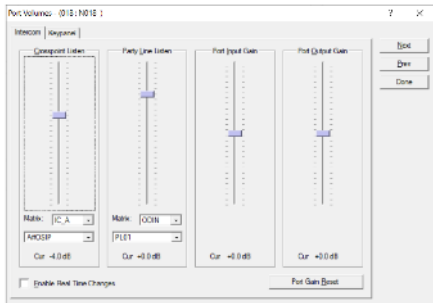
TRUNKING GAIN CONTROL



TRUNKING GAIN CONTROL

FEATURES / BENEFITS

- ▶ Users are able to adjust listen volumes for remote assignments as if they were local assignments
- ▶ Provides High quality audio, beneficial for remote production applications
- ▶ Available as downloadable license package – Part number F.01U.391.844 TM-10K_GAIN SW
- ▶ Point to Point gain control
- ▶ Party Line gain control



TRUNKING GAIN CONTROL

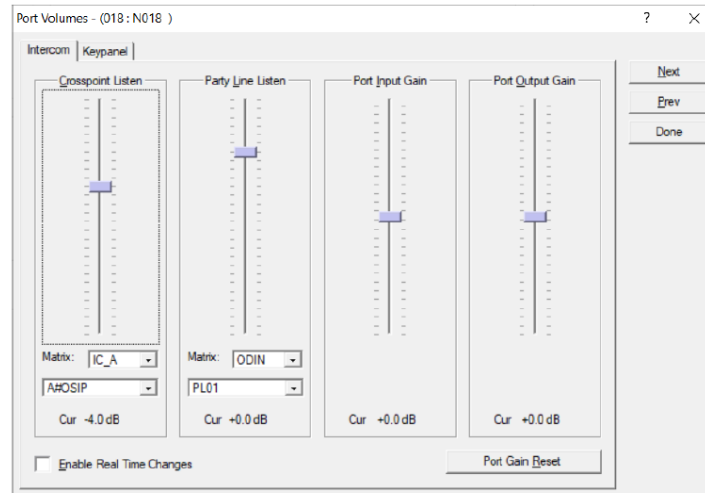
OVERVIEW

- ▶ Keypanel X can adjust the volume at which it hears remote Keypanel Y
 - ▶ Same setting applies if Y talks to X
 - ▶ Y can control the volume at which it hears X directly on the keypanel itself

Keypanel X



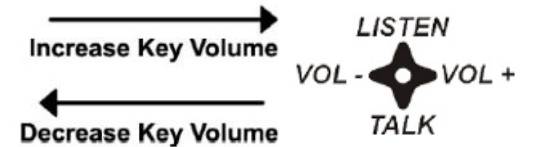
AZedit



TM-10K
Trunkmaster



Keypanel Y



TRUNKING GAIN CONTROL

CONFIGURATION AZedit

- ▶ Specify the maximum number of ports that can adjust remote list volumes
- ▶ Configure the maximum number of (non-unity) remote listen volumes per port (hard upper limit: 128 remote listen volumes per port)

(This is similar to the configuration for key labels.)

These settings are configured on the Options tab of the Intercom Configuration dialog, as in the following example to the right.

“Panels with Gains” must be no more than the number of ports in the system. “Gains Per Panel” is limited to a maximum of 128. If either of these values is set to 0, then remote volumes cannot be set for any port.

The screenshot shows the 'Intercom Configuration' dialog box with the 'Options' tab selected. The 'Remote Assignment Gains' section is highlighted with a red circle. The settings are as follows:

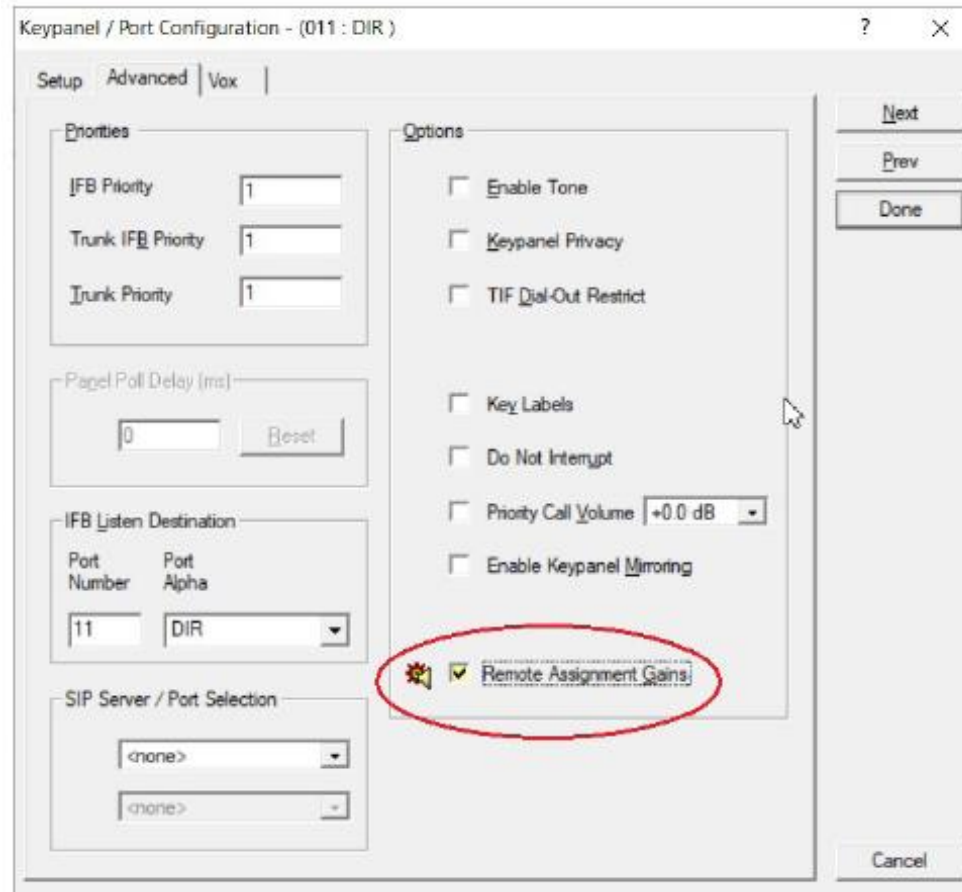
Section	Parameter	Value
Key Assignments	Keys per port	64
	Setup pages per port	4
Key Labels	Panels with Key Labels	132
	Key Labels Per Panel	64
Remote Assignment Gains	Panels with Gains	200
	Gains Per Panel	80
Checkboxes	Use input alphas	<input type="checkbox"/>
	Auto listen functions pick up all talk levels	<input checked="" type="checkbox"/>
	Always stack callers in call waiting window	<input checked="" type="checkbox"/>
	Configure onboard GPI Outputs in FR9528 mode	<input type="checkbox"/>
	Allow for remote trunk master	<input type="checkbox"/>
	Enable Unicode Alphas	<input type="checkbox"/>
	Force Autonomous Mode when no audio links up	<input type="checkbox"/>
	Don't generate tallies for in-use trunk assignments	<input checked="" type="checkbox"/>
	Don't generate tallies for off-hook TIF assignments	<input checked="" type="checkbox"/>
	Don't generate indefinite PL tallies	<input type="checkbox"/>
Generate snoop tallies	<input type="checkbox"/>	

Buttons at the bottom: Apply, Cancel, Test, Help.

TRUNKING GAIN CONTROL

OPERATION AZedit

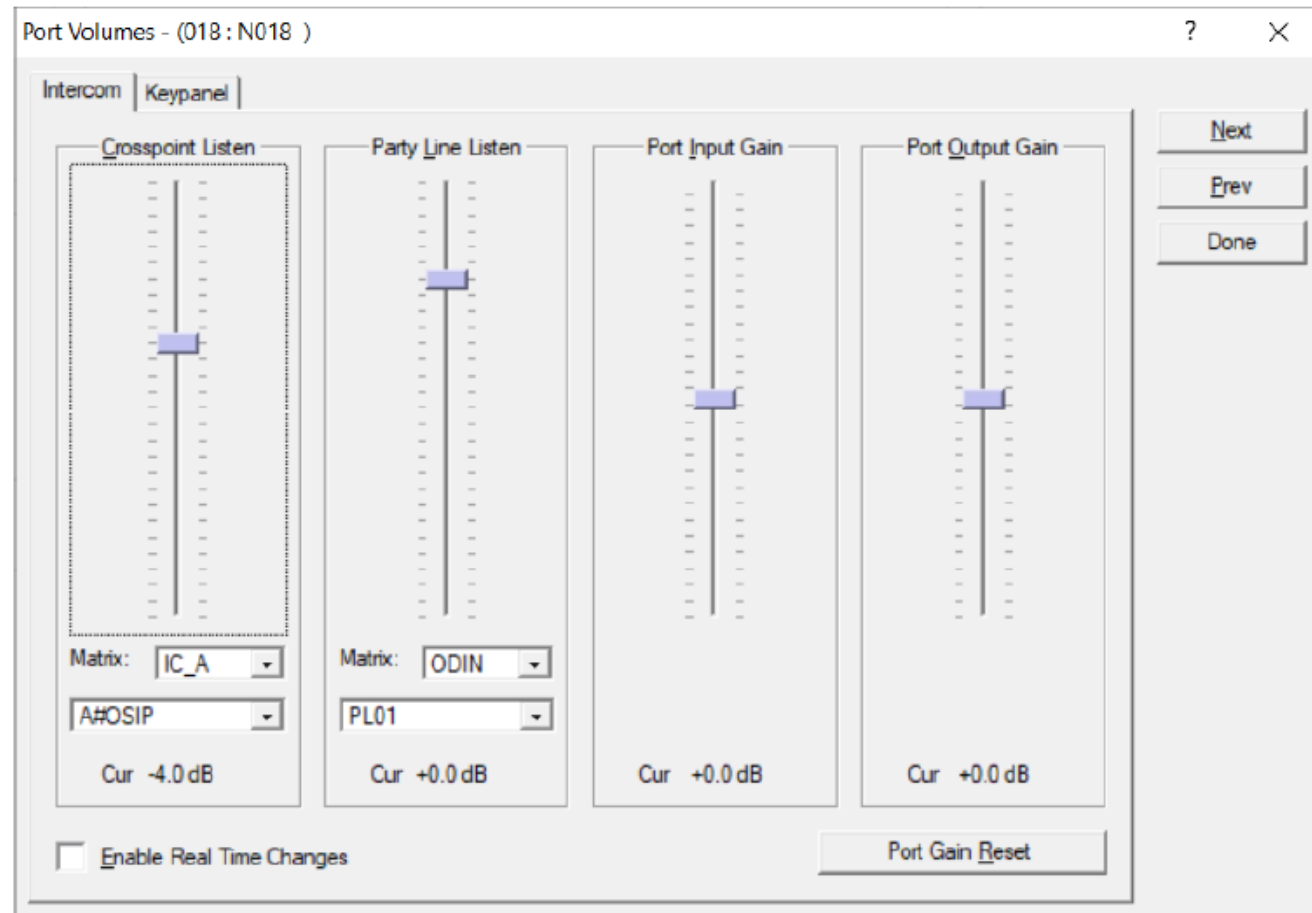
- ▶ Before the gain for a remote assignment can be adjusted, remote gain adjustment must be enabled for the port that wants to adjust the gain. This is done on the Advanced tab of the Keypanel Settings for that port (the “Edit...” button).



TRUNKING GAIN CONTROL

USER INTERFACE AZedit

- ▶ Port Volumes now have matrix drop downs in the Crosspoint Listen and Party Line Listen groups if the port has remote assignment gains enabled



TRUNKING GAIN CONTROL

USER INTERFACE

► AZedit Remote Assignment Gains View

Port: 18 Alpha: N018
KP-4016
Has some remote assignments

Gain Controls
Gain: -3.0 dB
Set Gain

Options
 Real-Time Changes

Alpha	Intercom	Type	Number	Gain
A#OSIP	IC_A	PP	344	-4.0 dB
A079&H	IC_A	PP	877	-10.0 dB
A25W7U	IC_A	PP	166	-5.0 dB
A4RXGG	IC_A	PP	116	-10.0 dB
A6BE[8	IC_A	PP	743	-5.0 dB
AJB0K_	IC_A	PL	102	+2.0 dB
B6BE[8	IC_B	PP	743	-10.0 dB
B9ZT7S	IC_B	PP	208	-10.0 dB
BBVVHU	IC_B	PP	023	-10.0 dB
BE GKS	IC_B	PP	902	-10.0 dB
C EUR-	IC_C	PP	402	-5.0 dB
RKOP111	RCM	PP	240	-10.0 dB
RKD 5X	REM	PP	567	-3.0 dB
RKE2ND	REM	PP	957	-10.0 dB

Buttons: Add Entry, Reset Gain, Select All, De-select All, Invert Selections

Status Bar: REM PP 567 ALARMS.2 USERS.1 ONLINE ODIN CC

TRUNKING GAIN CONTROL

USER INTERFACE Trunk Edit

- ▶ Trunk Edit Trunk Inspect View shows the listen gain column if *Volume Adjust across Trunking* is supported

Trunk Edit - [ONLINE]

File Online Edit View Trunk Intercom Diagnostics Help

Trunk

Trunk Inspection for: Trunk #1

Trunk		1		
From:	ODIN	TK36	N017	
To:	IC_A	AP7X	N098	

ODIN Requests					IC_A				
Alpha	Asgn	T	L	Gain	Alpha	Asgn	T	L	Gain
N018	N018	-	Y	-4 dB	A#OS	N344	-	-	+0 dB
		-	Y	+2 dB	AJB0	P102	-	-	-

For Help, press F1

ONLINE TM